



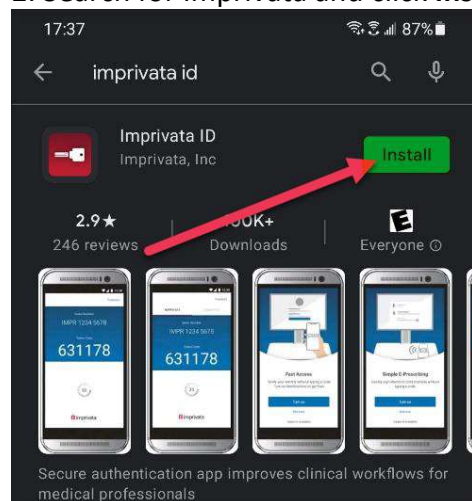
TIP SHEET: Imprivata ID Enrollment (Android)

Effective December 01, 2021

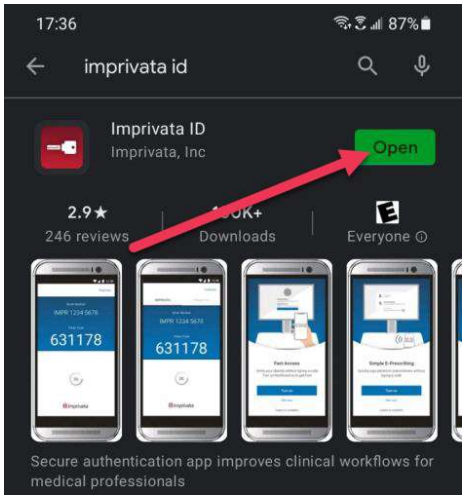
Imprivata ID is the system EvergreenHealth uses to provide an extra layer of security in addition to username/password when logging in remotely via our portals (Employee/Physicians/Partners). The extra layer of security is activated via your smartphone.

If you can't install the app because you do not have a smartphone, you can enroll your cellphone number then at login a code for access will be sent to you via SMS (text message).

1. Open the play store
2. Search for Imprivata and click **Install**



3. Wait for the app to finish downloading and then click **Open**



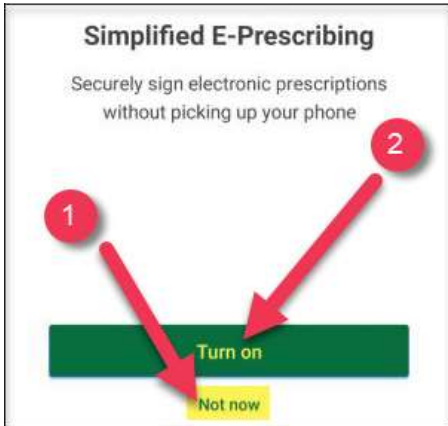
4. Even if you have used Imprivata before, including with Evergreen, please click **This is my first time**



5. On the Fast Access screen, click **Turn on**



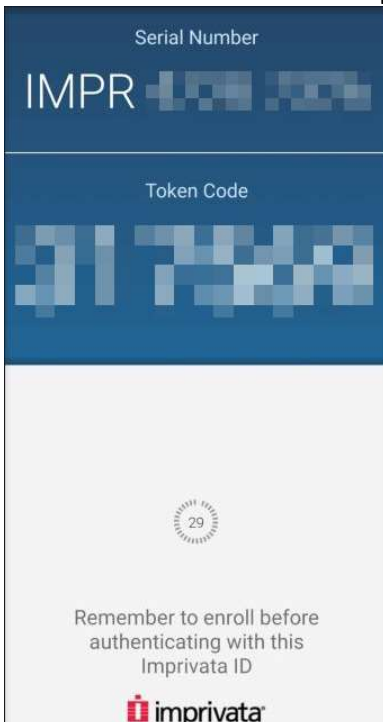
6. If you are a provider, on the Simplified E-Prescribing screen click **Turn on (1)**, otherwise click **Not now (2)**



7. On the Automatic Signout screen click **Not Now**



8. The screen should now display a serial number and a token code.



9. Open any browser and navigate to one of the external portals

- a. [Employee's Portal](#)
- b. [Provider's Portal](#)
- c. [Partner's Portal](#)

10. Login to the Portal using your network ID and password (the same credentials you would use to sign into a computer at the hospital)

11. You will see a screen that says additional information required. Click on **Enroll Imprivata ID**.



12. On the screen that follows, enter your Serial number and token code as shown on the Imprivata app into their respective fields. When entering the Serial number, make sure to include the letters but not the spaces. The format will be *IMPRxxxxxxx*.

13. On the next screen, click **Got it**

14. On the final setup screen, instead of clicking Enroll SMS code, click **Do this later** below the red button.

15. If you now see the Citrix storefront, which looks like this, you have successfully enrolled.

